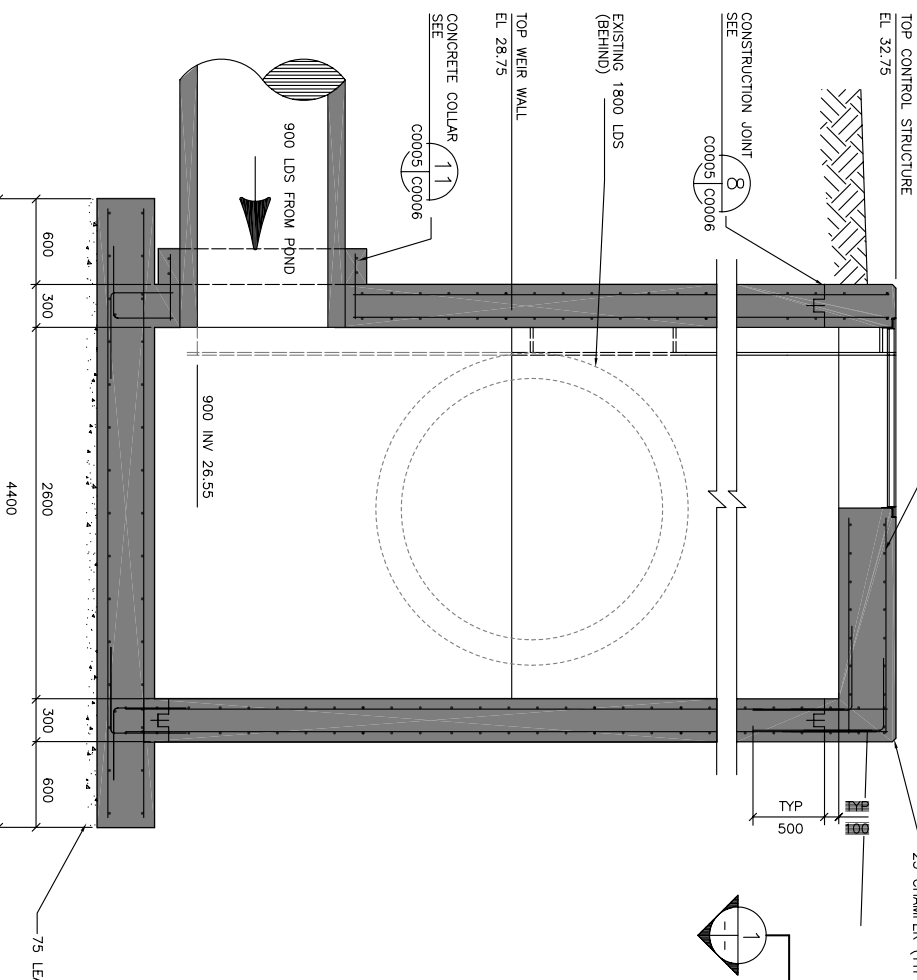
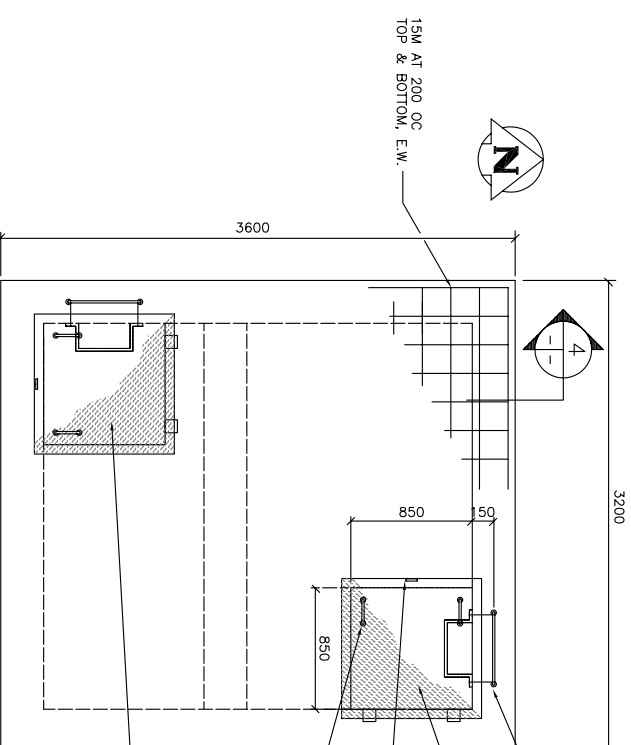


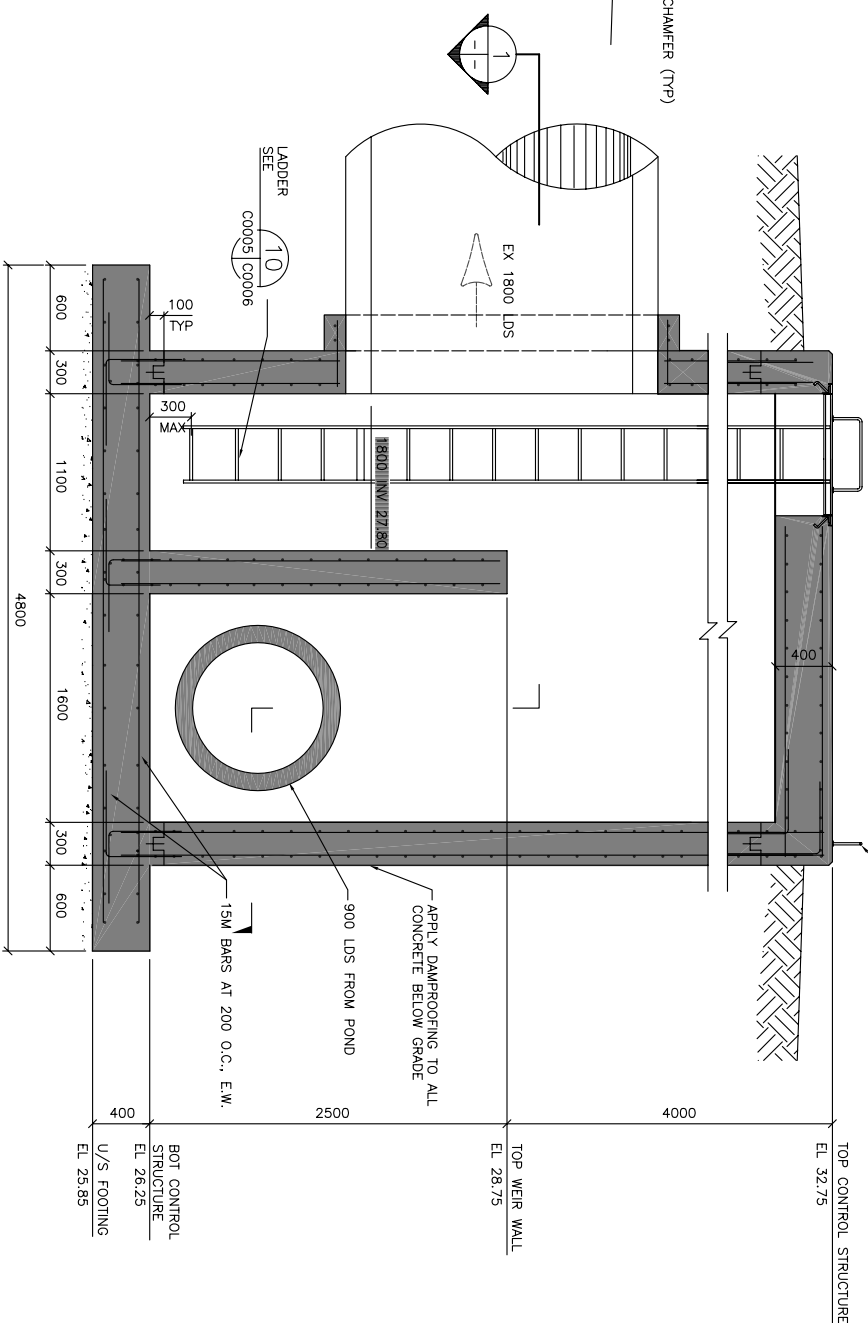
1 PLAN SECTION
1 : 25



3 SECTION (LOOKING NORTH)
1 : 25



2 ROOF PLAN
1 : 25



4 SECTION (LOOKING WEST)
1 : 25

GENERAL NOTES:

- STRUCTURAL DRAWINGS SHOW THE COMPLETED STRUCTURE. THEY DO NOT SHOW COMPONENTS WHICH MAY BE NECESSARY FOR SAFETY DURING CONSTRUCTION. THE CONTRACTOR IS RESPONSIBLE FOR SAFETY IN AND ABOUT THE JOB SITE DURING CONSTRUCTION.
 - REPORT ANY UNSOUND CONDITIONS TO THE CONSULTANT IMMEDIATELY.
- CONCRETE:**
- CONCRETE MATERIALS AND WORKMANSHIP TO CONFORM TO CSA-A23.1-00, INCLUDING COLD WEATHER REQUIREMENTS WHEN THE MEAN DAILY TEMPERATURE FALLS BELOW 5°C.
 - CONCRETE 28 DAY COMPRESSIVE STRENGTH TO BE 30 MPa. CEMENT TO BE TYPE 50. NOMINAL AGGREGATE SIZE TO BE 20mm.
 - LEAN MIX WORKING BASE CONCRETE TO BE IN ACCORDANCE WITH SPECIFICATIONS.
- REINFORCING STEEL:**
- REINFORCING STEEL CONFORMS TO CONFORM TO CSA G30.18-M92, GRADE 400W.
 - CLEAR COVER FOR REINFORCING STEEL IN CONCRETE:
- CONCRETE EXPOSED TO EARTH AND INSIDE OF CONTROL STRUCTURE:
75mm
- ALL OTHER CONCRETE: 50mm
- FOUNDATION:**
- THE CONTROL STRUCTURE IS DESIGNED ON THE BASIS OF SOIL/PRESSURES DUE TO A SURROUNDING FIRM TO STIFF CLAY. REPORT DIFFERING SITE CONDITIONS IF ENCOUNTERED.

ALUMINIUM:

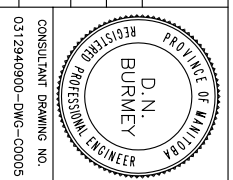
- ALL ALUMINIUM WORK TO CONFORM TO CSA/CAN3-S157.
- ALUMINIUM SECTIONS TO CONFORM TO ALUMINIUM ALLOY SPECIFICATION REFERENCE AS FOLLOWS:
- PLATES 6061-T651
- SHEETS 6061-T6
- EXTRUSIONS 6061-T6
- ALL ALUMINIUM IN CONTACT WITH CONCRETE TO BE COATED WITH AN ALKALI RESISTANT BRILLIANTOUS PAINT.
- STAINLESS STEEL TO BE GRADE 316.

STRUCTURAL STEEL:

- STRUCTURAL STEEL TO CONFORM TO G40.21, GRADE 300W OR 350W.
- DETAILING, FABRICATION, AND ERECTION TO CONFORM TO CSA S16.1.
- FOR BOLTED CONNECTIONS USE GRADE A325 BOLTS UNLESS NOTED OTHERWISE.
- WELDING TO CONFORM TO CSA W59.1. MIN. 6mm FILLET WELD, UNLESS OTHERWISE NOTED.
- ALL STEEL COMPONENTS TO BE HOT DIP GALVANIZED TO CSA G164 WITH MIN NET RETENTION OF 600g/m²

NO.	REVISIONS	DATE	BY
0	ISSUED FOR TENDER	03.12.09	
1	ISSUED FOR APPROVAL	03.12.09	

WARDROP Engineering Inc.	
DESIGNED DNB	CHECKED
DRAWN GMD	APPROVED
HR. SCALE: 1 : 25	RELEASED FOR CONSTRUCTION
DATE: 03.11.12	DATE:



THE CITY OF WINNIPEG
PLANNING, PROPERTY & DEVELOPMENT DEPARTMENT

FAIRFIELD PARK LOCAL IMPROVEMENT DISTRICT
STORMWATER RETENTION BASIN EXCAVATION,
OUTFALLS & ASSOCIATED WORKS
STORMWATER RETENTION BASIN OUTLET CONTROL
STRUCTURE PLANS, SECTIONS AND NOTES

CITY DRAWING NUMBER
LD-2978
SHEET 5 OF 7

C0005

